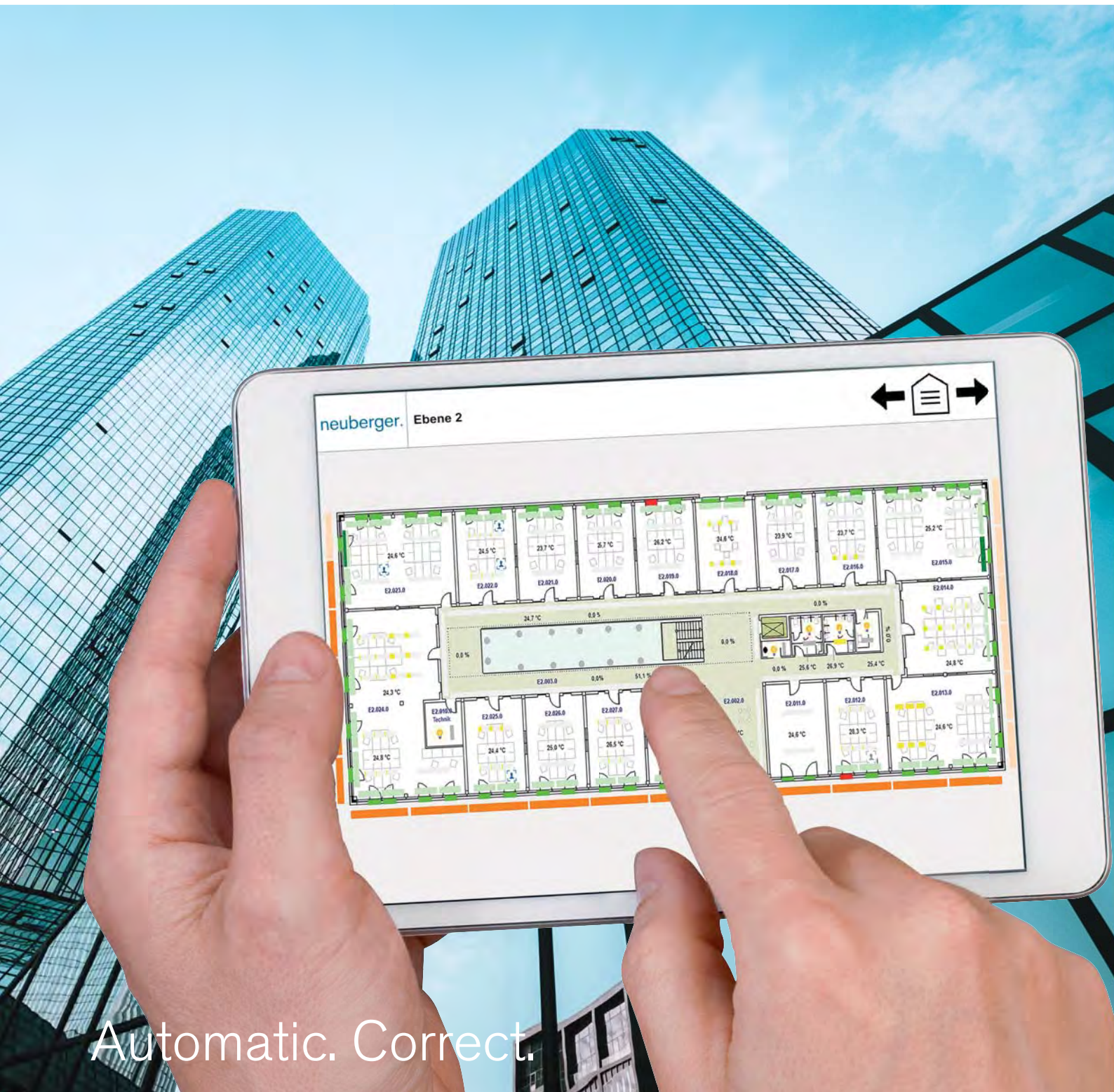


neuberger.

product

Information about neutral building automation



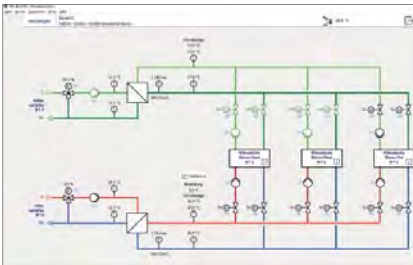
Automatic. Correct.

Neutral Building Management System ProGrafNT

With your decision in favour of a Neuberger Building Management System you make the right choice. As all bus systems used are "open", a high flexibility is guaranteed in case of a supplementary system expansion. Through graphical representation, evaluation and recording of all automation levels it will be easy to keep track.

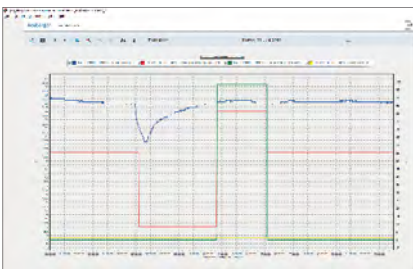
Plant Visualization

- User-friendly, plant-oriented concept for operation and visualization
- Graphic mode for generation or update of the plant displays by the operator
- Graphical processing of control loops and time switch



Historical Database / Trending

- Event archive, Minute-, 1/4 hour and hour average values, sum values of energy and operating hour counters
- Analogue and digital archive together in one representation
- Free choice of the archiving time period (e.g. 5 years)

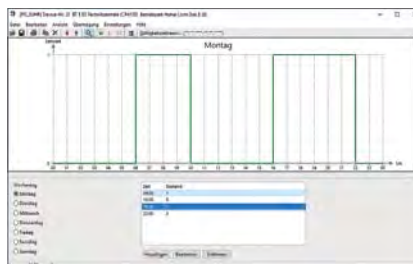


Interfaces

- Open communication (BACnet IP), PROFIBUS FMS, ModBus, LON, OPC, KNX, DSL etc.
- M-Bus, ESPA etc. via communication module
- Direct data transmission (e.g. Excel, Open Office, CSV, TSV, HTML)
- Export to printer, clipboard or via file (xls, csv, tsv, htm)

Operating times

- Graphic time switch program for operating times (e.g. weekly, holiday and special programs)
- Automatic heating time optimization

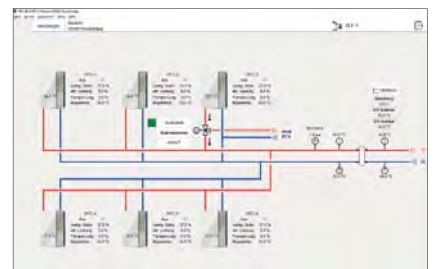


Event and alarm management

- Evaluation through event and alarm lists (database) for plant optimization
- Status window for status messages and news ticker
- Forwarding of alarms to printer, mobile phones, etc.
- Individual reports can be generated, e.g. heating journal, evaluations
- Alarming via mobile phone (SMS, voice output), pager, fax, e-Mail etc.
- Determination of the responsible person(s) through shift plan evaluation

Options

- Remote control and remote maintenance via modem
- Integrated WebServer for Internet/ Intranet Clients, as well as Client/ Server solution with TCP/IP-networking



Energy management according to DIN EN ISO 50001

- Data acquisition and monitoring
- Monitoring and diagnosis
- Energy information system with peak load limitation by E-MAX
- Reports and data export



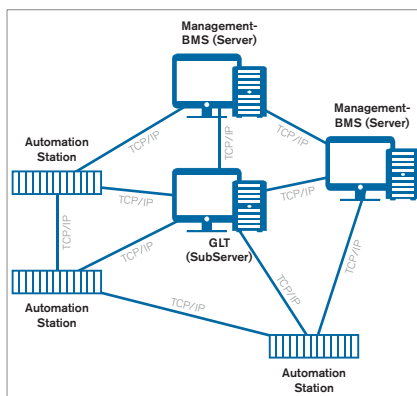
Energy efficiency on the basis of weather forecast

- Integration of weather forecast in control strategies
- Reduction of energy cost with highest comfort
- Requirement-oriented source planning
- Individual methods for every building



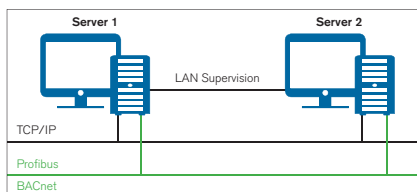
System architecture

- »Ready for Management-BMS«
- Centrally and freely configurable
- Hierarchical networking with Management BMS and SubServers
- Free structure with Multiservers
- Mesh network structure



Safety

- Monitoring/Processing/Parameterizing and Configuring via freely assignable rights and limitations
- Audit Trail with unchangeable entries via user, operator and system processes
- Backup software for automatic data backup, e.g. on system drive or DVD
- Pre-configured for redundancy solutions with parallel servers and virtual machines (VM)



GMP* Validation / Qualification

- Creation and execution in accordance with the FDA directives (GAMP, 21CFR Part 11, GMP-directives)
- ProGrafNT-GMP provides a safe access control and Audit Trail to meet the FDA requirements in 21CFR Part11
- Switching-in of clean room sensors for particles, pressure, flow, humidity, temperature, etc.
- Access control and interlock systems for airlocks with pressure control and alarm signal
- Access management with flexible assignment of individual and group rights as well as configuration of room and time-specific accesses

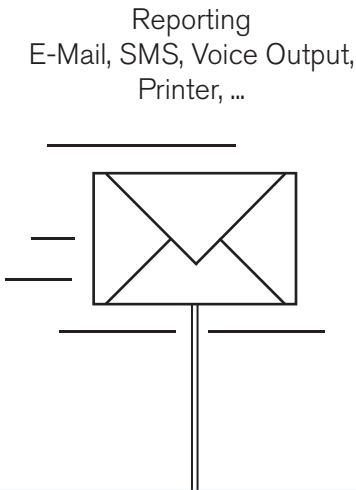
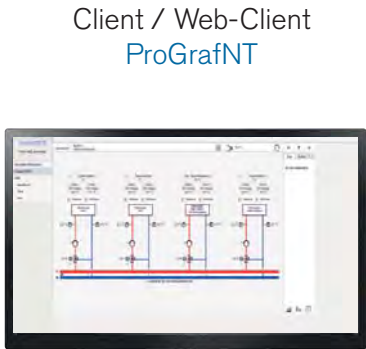
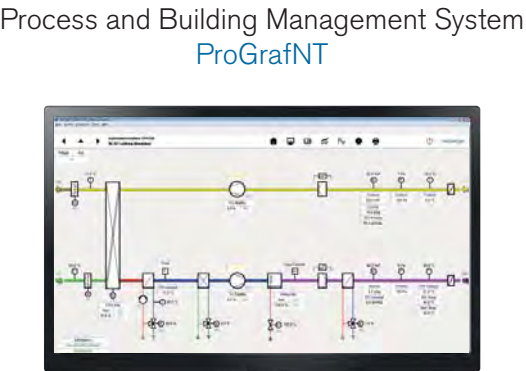
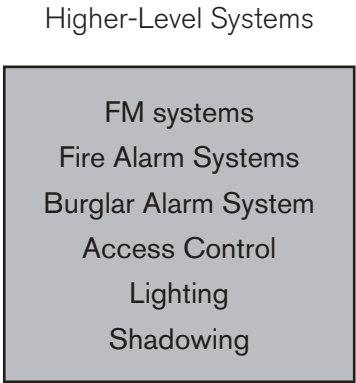
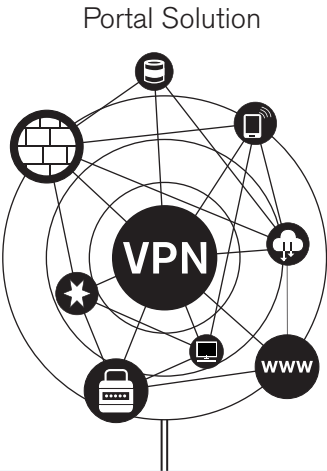


* GMP = Good Manufacturing Practice, the strictest production directives all over the world – pursuant to the standards of the American Food and Drug Administration (FDA)

ProGrafNT -
the neutral management system for your building

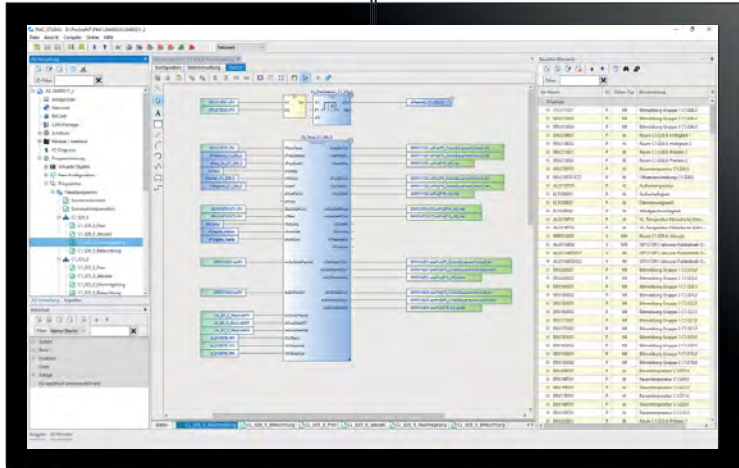
Assumes central management tasks as well

Internet/Intranet, Ethernet, TCP/IP,
BACnet/IP, OPC, LON

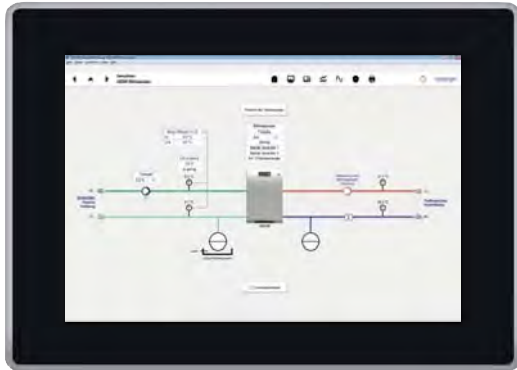


PMC2 / Open.Room -
the flexible and reliable automation systems

WinPMC, PMC_Studio
Programming,
Commissioning



Operating device
Displaying, Parameterizing



PMC2 Automation Station 4000
for installation in 19" rack
integrated local override/indication device (LO/ID)



CPU module with web interface
Interfaces: 2x Ethernet, LON,
2x USB for programming device,
2x microSD
Protocols: BACnet/IP,
Modbus RTU RS485 / Modbus TCP
group fault signal, LED test,
watchdog relay, archive

Input/output modules
Digital inputs/outputs,
Signal inputs, relay outputs,
LEDs red/green, operating and
closed-circuit current principle,
delay periods

Control/switch modules
Hand switch,
Display operation/fault,
Hardware safety interlock

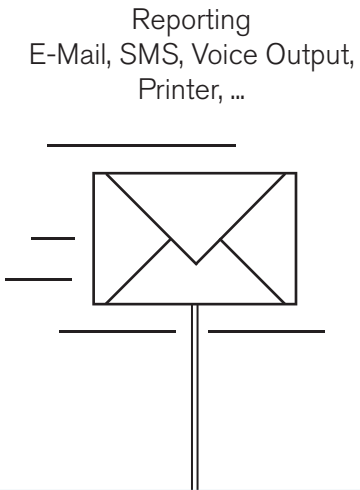
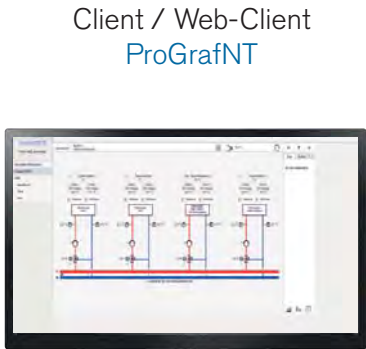
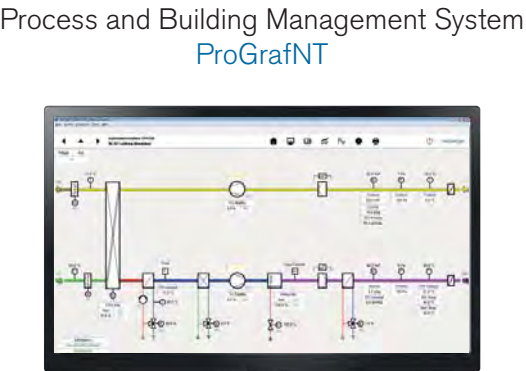
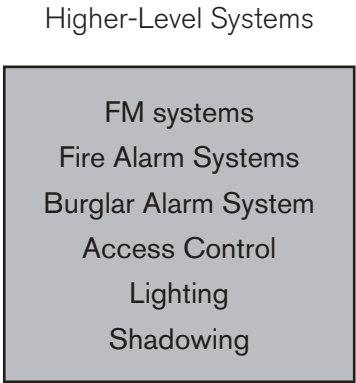
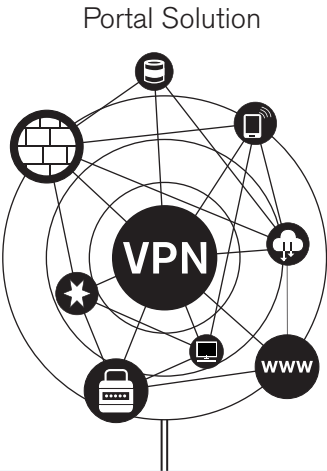
**Controller module
with local override/indication
device (LO/ID)**
Analogue inputs and outputs
Interfaces:
Ni1000, PT1000, 0-10V, 0/4-20mA,
manual control of regulating signals,
threepoint,

Communication module
Interfaces:
LON, KNX, M-Bus, RS485,
RS232, TTY and many more
Protocols:
Modbus, 3964R-RK512, ASCII

ProGrafNT -
the neutral management system for your building

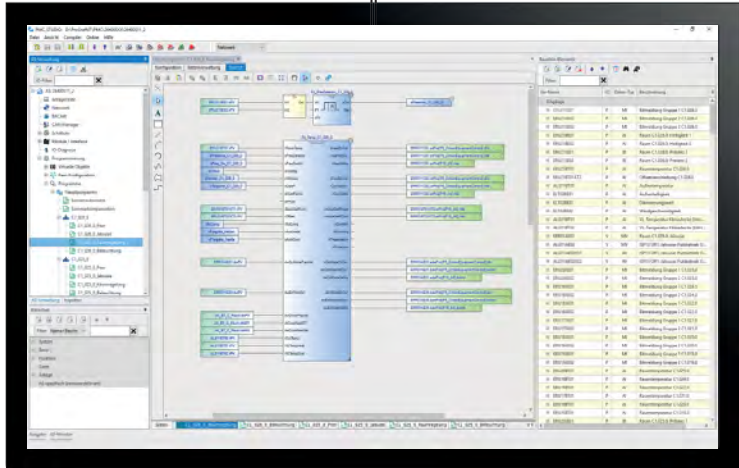
Assumes central management tasks as well

Internet/Intranet, Ethernet, TCP/IP,
BACnet/IP, OPC, LON



PMC2 / Open.Room -
the flexible and reliable automation systems

WinPMC, PMC_Studio
Programming,
Commissioning



Operating device
Displaying, Parameterizing



PMC2 Automation Station 6000
for carrier rail mounting



CPU module with web-interface
Interfaces: 2x Ethernet, LON,
2x USB for programming device,
2x microSD
Protocols: BACnet/IP,
Modbus RTU RS485 / Modbus TCP
group fault signal, LED test,
watchdog relay, archive

Communication module
Interfaces:
LON, KNX, M-Bus, RS485,
RS232, TTY and many more
Protocols:
Modbus, 3964R-RK512, ASCII

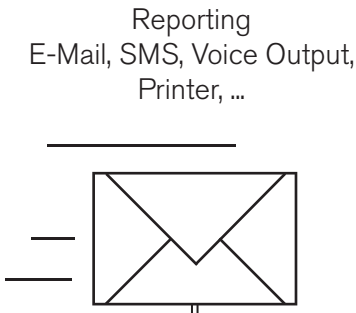
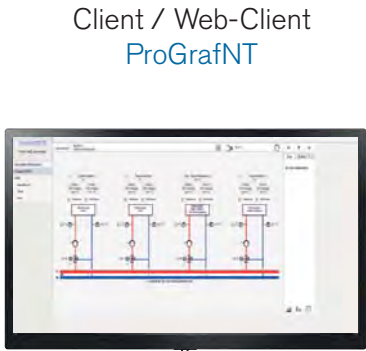
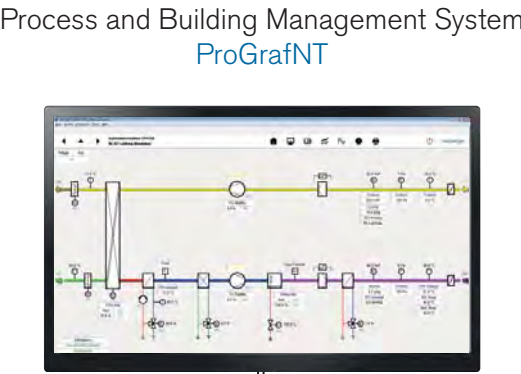
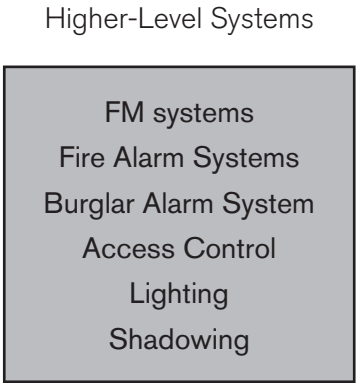
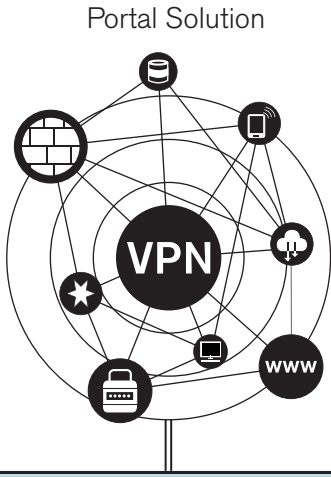
Input/output modules
digital inputs/outputs,
Signal inputs, relay outputs,
LEDs red/green, operating and
closed-circuit current principle,
adjustable delay times

Controller module
Analogue inputs and outputs,
Interfaces:
Ni1000, PT1000, 0-10V, 0/4-20mA,
three point

ProGrafNT -
the neutral management system for your building

Assumes central management tasks as well

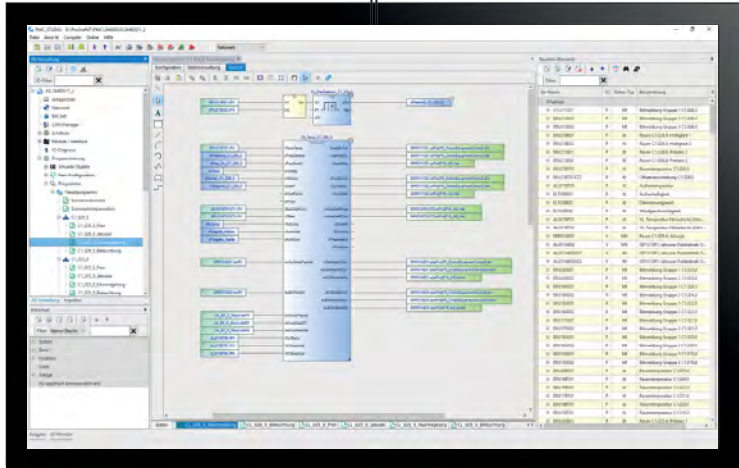
Internet/Intranet, Ethernet, TCP/IP,
BACnet/IP, OPC, LON



PMC2 / Open.Room -
the flexible and reliable automation systems

PMC2 Compat Automation Station DR4000
for carrier rail mounting and wall mounting

WinPMC, PMC_Studio
Programming,
Commissioning



Operating device
Displaying, Parameterizing



CPU module with web-interface
Interfaces: 2x Ethernet, LON,
2x USB for programming device,
2x microSD
Protocols: BACnet/IP,
Modbus RTU RS485 / Modbus TCP
group fault signal, LED test,
watchdog relay, archive

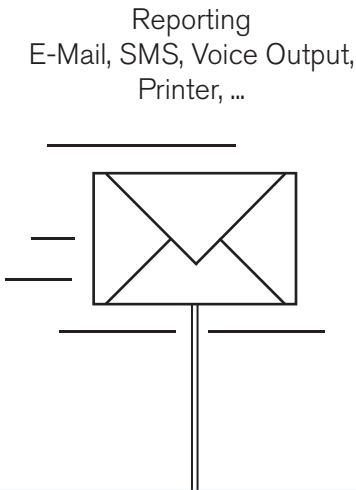
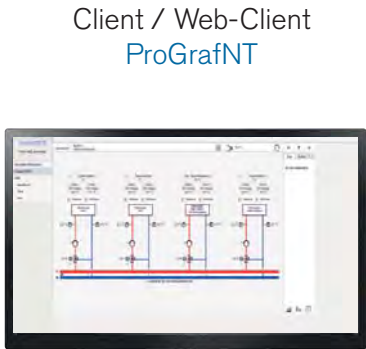
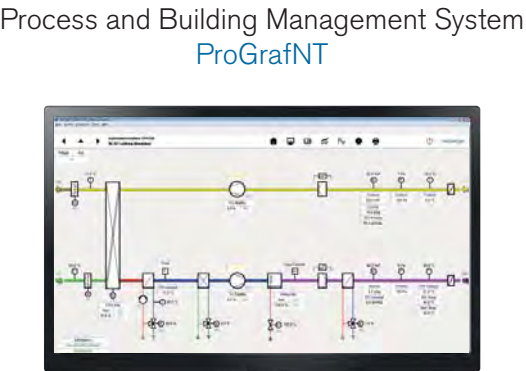
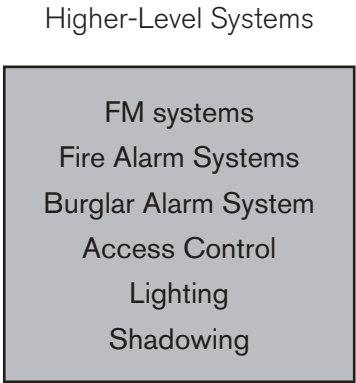
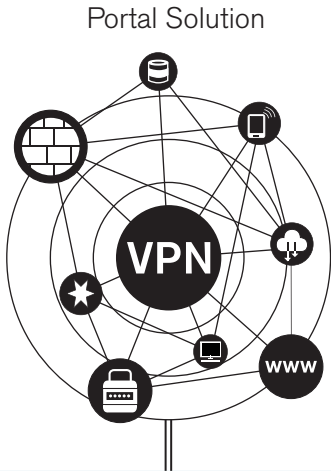
Inputs and outputs
8x analog inputs (Ni1000, PT1000, 0-10V, 0/4-20mA)
6x analog outputs (0-10V)
8x digital inputs
8x digital outputs (up to 230V)

Operating display BD4100
inclusive plain text operation
and free programming

ProGrafNT -
the neutral management system for your building

Assumes central management tasks as well

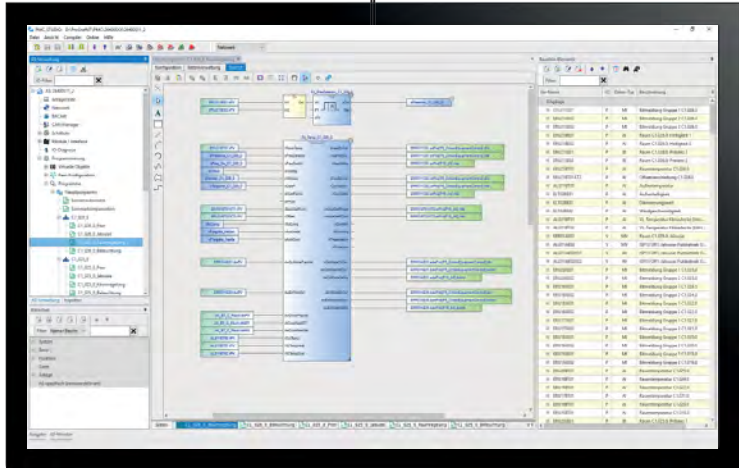
Internet/Intranet, Ethernet, TCP/IP,
BACnet/IP, OPC, LON



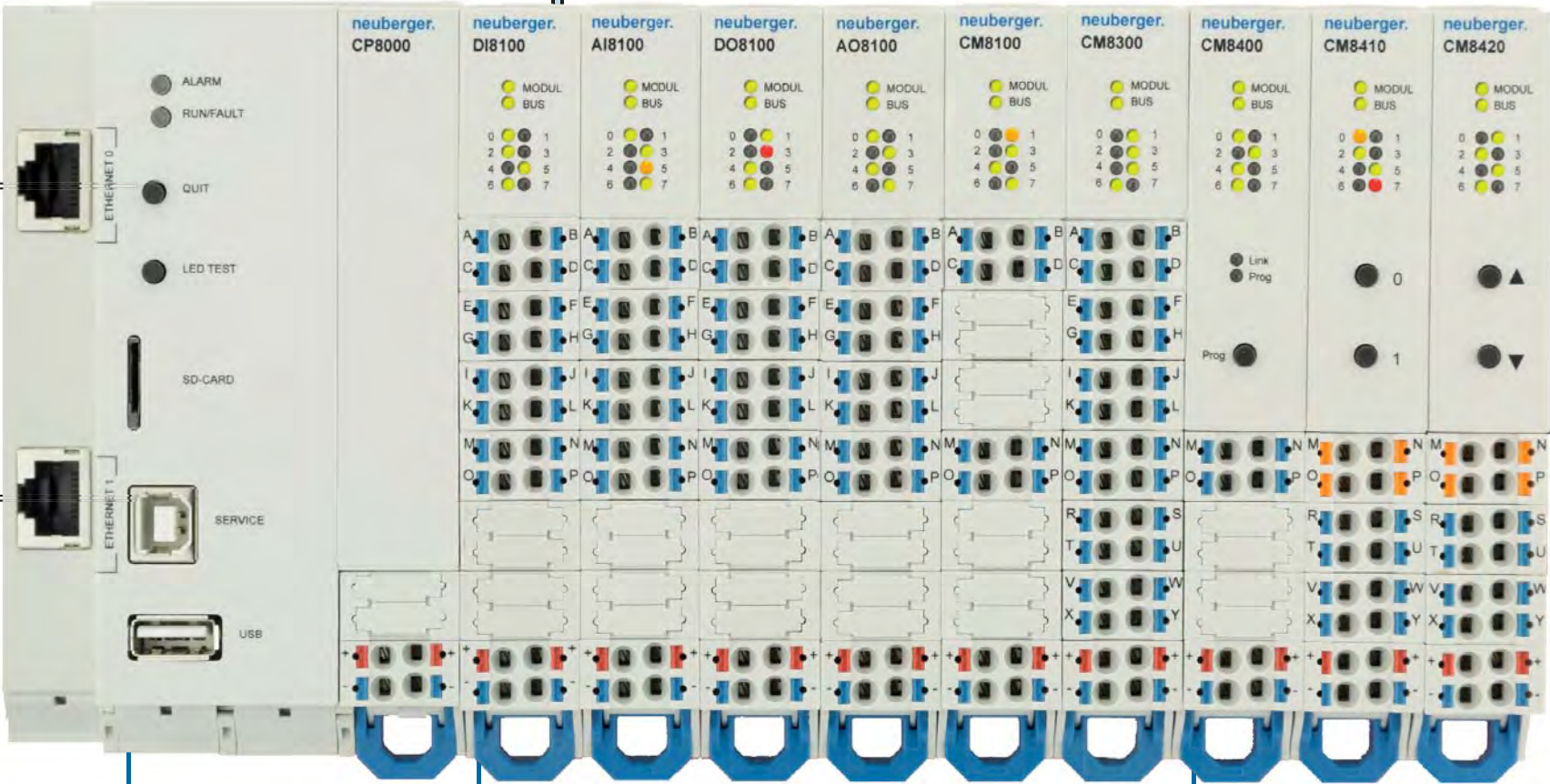
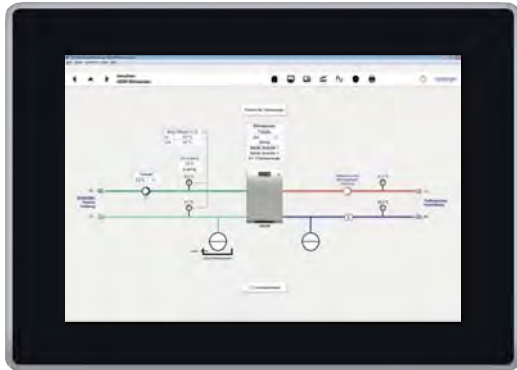
PMC2 / Open.Room -
the flexible and reliable automation systems

Room Automation System Open.Room
for control cabinets, ceiling and floor distributors

WinPMC, PMC_Studio
Programming,
Commissioning



Operating device
Displaying, Parameterizing



CPU module with web-interface
Interfaces: 2x Ethernet,
2x USB, 2x microSD
Protocols: BACnet/IP,
Modbus RTU/Modbus TCP,
group fault signal, LED test
and many more

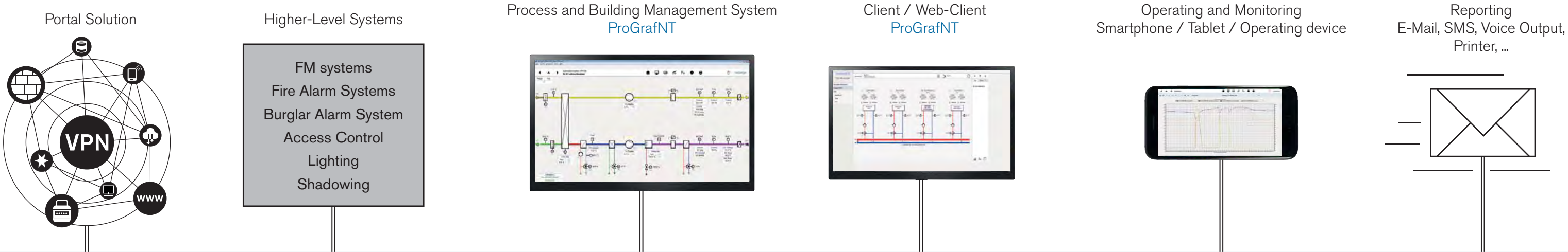
Input/output modules
for digital and analog
inputs and outputs
Interfaces:
Ni1000, PT1000,
0-10V, 0/4-20mA

Communication modules
Interfaces: DALI, EnOcean,
KNX, SMI, Modbus RTU, MQTT, ...

ProGrafNT -
the neutral management system for your building

Assumes central management tasks as well

Internet/Intranet, Ethernet, TCP/IP,
BACnet/IP, OPC, LON



PMC2 / Open.Room -
the flexible and reliable automation systems

Operating device
flexible in size, design and function
customer specific

Room Controller ER4000
combines modern design, simple operating concept,
manufacturer-neutral communication and, if desired,
customer-specific design of the control and operating
level



Touch Panels
for web visualization and for
operation of the automation
stations via a local or remote
connection

Compatible with:
PMC2 Automation Station 4000
PMC2 Automation Station 6000
PMC2 Compact Automation Station DR4000
Room Automation System Open.Room

Inputs and outputs
Interfaces:
3x analog inputs (Ni1000 or 0-10V)
2x analog outputs (0-10V)
2x digital inputs (24V AC/DC)
2x digital outputs (24V)

The entire service portfolio from one source

Analysis, planning, solution

- Transparent definition of prices and services
- Realisation of the der implementation, factory and assembly planning
- Detailed scheduling and resource planning for target-oriented execution
- One permanent contact person during all project phases



Hard- and software development

- All systems originate from Neuberger and include the Automation Station as well as BMS-Software
- Your advantages: continuous enhancements, high availability, customer-specific and future proof solutions

Production

- Own production of switchboards and electronics assemblies und Elektronikbaugruppen
- Quality management system according to DIN EN ISO 9001
- Environmental management system according to DIN EN ISO 14001
- All systems are tested in a test field and in a climatic chamber before delivery



Independent through open systems

- All systems are equipped with standardized communication and signal interfaces.
- Simple integration of external systems and equipment e.g. Ethernet TCP/IP, Profibus, OPC, Modbus etc.
- You maintain all programming and configuration tools including application programs

Installation / Commissioning

- All systems are installed and commissioned by highly qualified service technicians from Neuberger
- The service technicians remain your personal contact person even after completion



Unlimited spare parts supply

- Lifelong and unlimited spare parts supply
- No product discontinuations
- Spare parts deliveries on site within 24 hours

You have a goal, we have the experience. **Automatic. Competent.**

Neuberger
Gebäudeautomation GmbH
Oberer Kaiserweg 6
91541 Rothenburg o.d.T.
GERMANY
Phone: +49 9861 402-0
Fax: +49 9861 402-333
E-Mail: info@neuberger.net
Internet: www.neuberger.net

One stop solution

The Neuberger company, founded in 1968, is a highly qualified supplier of products and solutions in the building automation and pharmaceutical industry.

Since 1995 Neuberger is a part of the Weishaupt Group and delivers everything from one source: planning, products, software, installation, commissioning, maintenance and service support 24 hours / 7 days.

Neuberger Gebäudeautomation provides highest efficiency to enable connection of all technical systems.



Headquarters in Rothenburg ob der Tauber, Germany