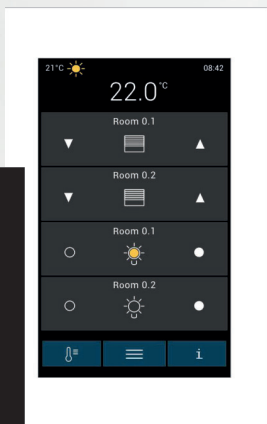
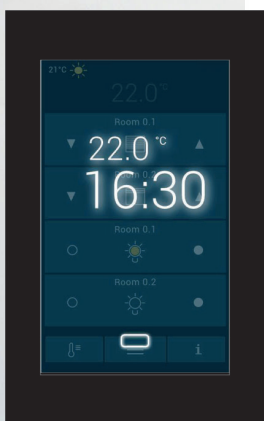


neuberger.

# product

RoomPanel RP8100



Automatic. Innovative.

Room panel made of **Neuberger**

## Communication features and integrated control functions. RoomPanel RP8100.



Touch

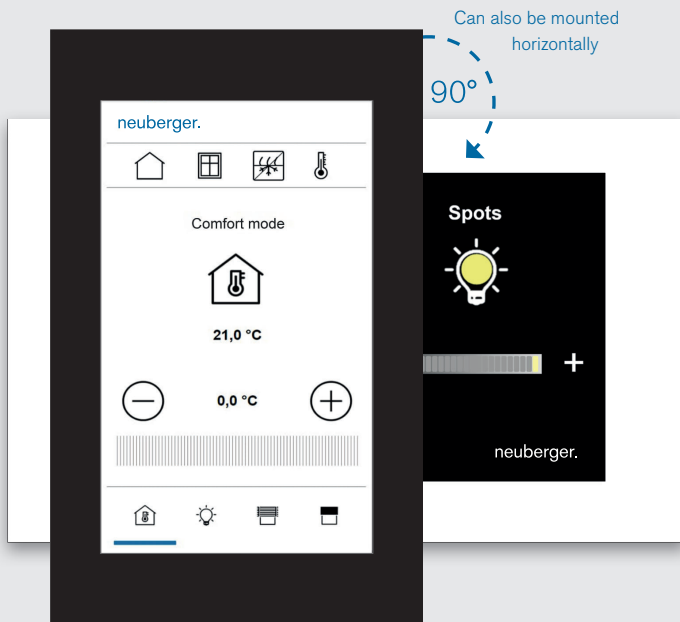


Flexible



Individual

### The next generation of room control panel



### Functions and features:

- Flexibility with a customisable and intuitive operating and visualisation concept, and fully configurable
- Ability to operate in both horizontal and vertical installation positions
- Integrated sensors for temperature, humidity, brightness, presence, VOC, and CO2 monitoring
- Brightness-dependent display lighting
- Display activation via presence detection
- Autonomous control and visualisation of lighting, shading, heating, and cooling with seamless connectivity to building management systems via BACnet/IP
- Remote bus modules can be used for easy system extension
- Integrated web server
- Fully enclosed glass front with flat surface
- Housing available in black or white
- High-resolution, capacitive 5" touch display
- Flush mounting for convenient installation and commissioning
- Multiple interfaces such as Ethernet, BACnet/IP, web (http/https), Modbus TCP, Modbus RS485, MQTT, KNX
- Programming via network or USB service port

### Wide range of applications, including:



Offices and administrations



Hotels and resorts



Industry



Residential property

### Technical data:

- CPU: 1.6 GHz Quad ARM Cortex-A53
- RAM: 2 GB
- Display resolution: 720 x 1280 pixels
- Power supply: 24 V DC optional via PoE
- Dimensions (WxHxD): 160 x 100 x 25 mm
- Weight: approx. 200 g

# Everything from one source

**Neuberger** – your premium supplier of building automation, room automation, clean room and process technology products and solutions.

**Neuberger** represents reliability and high quality. **Neuberger** may be a medium-sized company, but its product portfolio has brought success on a global scale. Its lean structure empowers the company to operate independently, responsively, flexibly, and consistently.

**Neuberger** is committed to providing dependable service as a key component of our comprehensive service portfolio, which also includes an unlimited spare parts supply and round-the-clock, 24/7 service.

Follow us on social media!



**Neuberger**  
Gebäudeautomation GmbH  
Oberer Kaiserweg 6  
DE-91541 Rothenburg o.d.T.  
Tel: +49 9861 402-0  
Email: [info@neuberger.net](mailto:info@neuberger.net)  
[www.neuberger.net](http://www.neuberger.net)