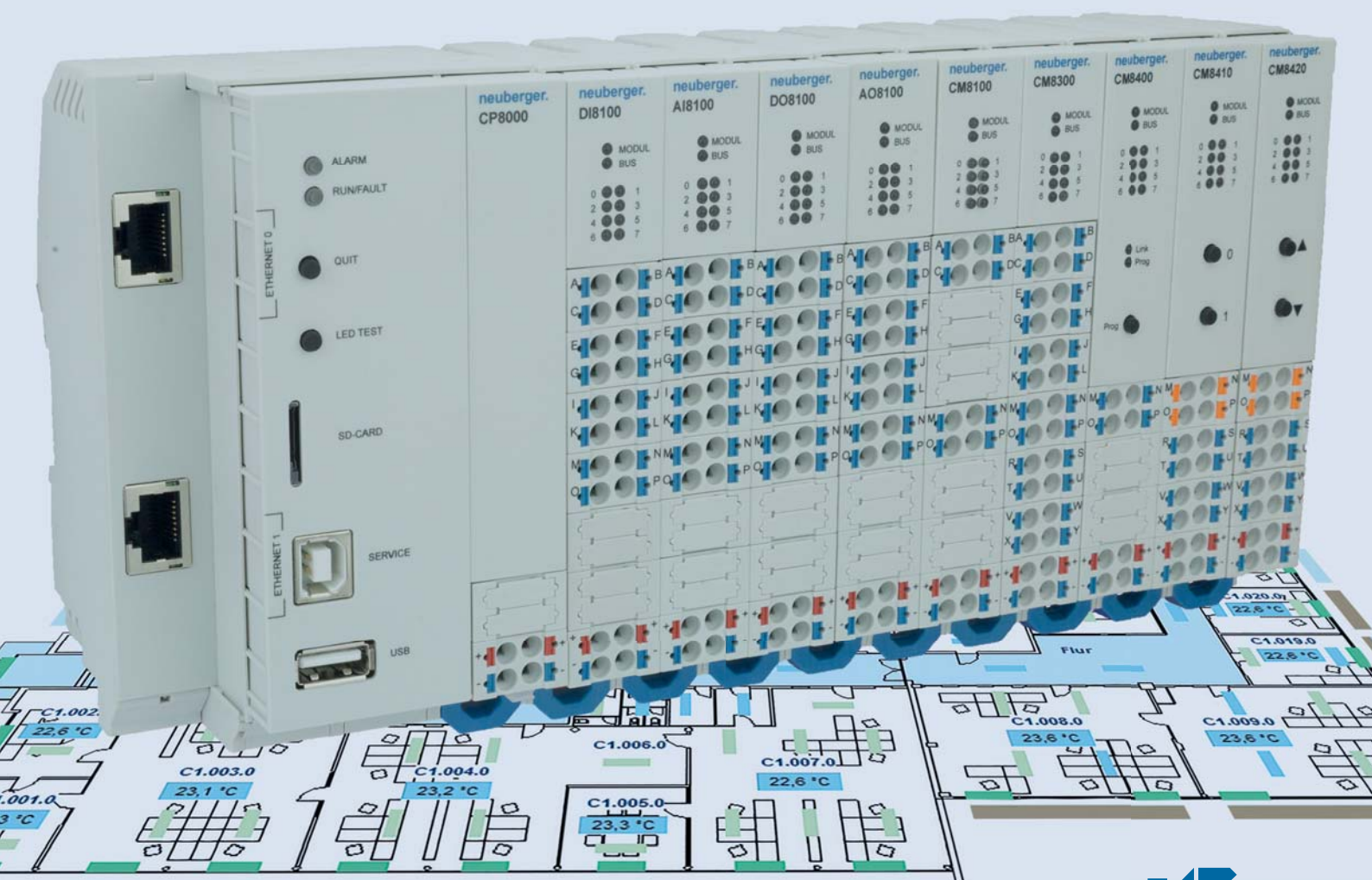


# neuberger.

# product

The Room Automation System



## Open. Room.



GA efficiency class A

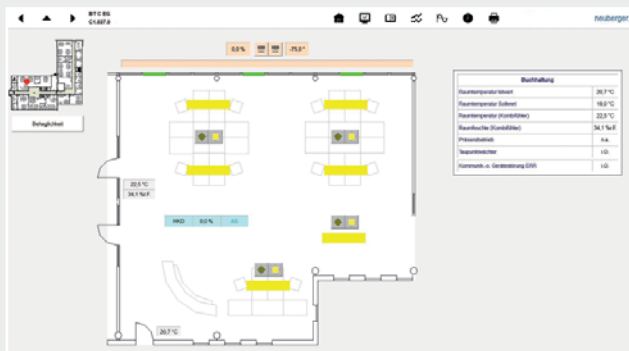
Room Automation System of the latest generation

## Functional and efficient



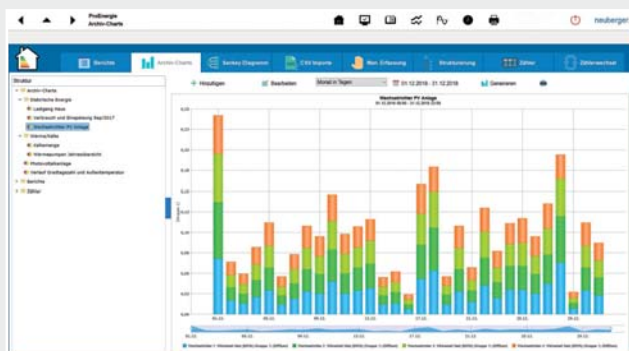
### Application functions

- Room climate: temperature and ventilation control according to occupancy, air quality, presence
- Lighting: control and dim according to occupancy, presence and brightness
- Sun protection: Shading correction and slat tracking according to the position of the sun and the presence of energy



### Operating functions

- Intuitive operating functions for room climate, lighting and sun protection
- Various possibilities of operation for example via room control units, touch control units and on host computer
- Functions of the operating devices freely programmable and parameterizable



### Energy efficiency

- Integration into the cross-trade energy management system ProEnergy
- Reduction of the energy costs through integration of weather forecast data into the control strategies
- Perception of consumption data for energy-optimized building operation
- GA efficiency class A, therefore best conditions for a building certification according to LEED/DGNB

# The room automation system in the review

## Modular and flexible

The configuration and number of the various input, output and communication modules can be done flexibly. All modules of **Open.Room** can be combined with each other. Thanks to the simple locking system, they can be quickly removed and replaced if necessary. The operation can be continued without any problems.

## Space-saving

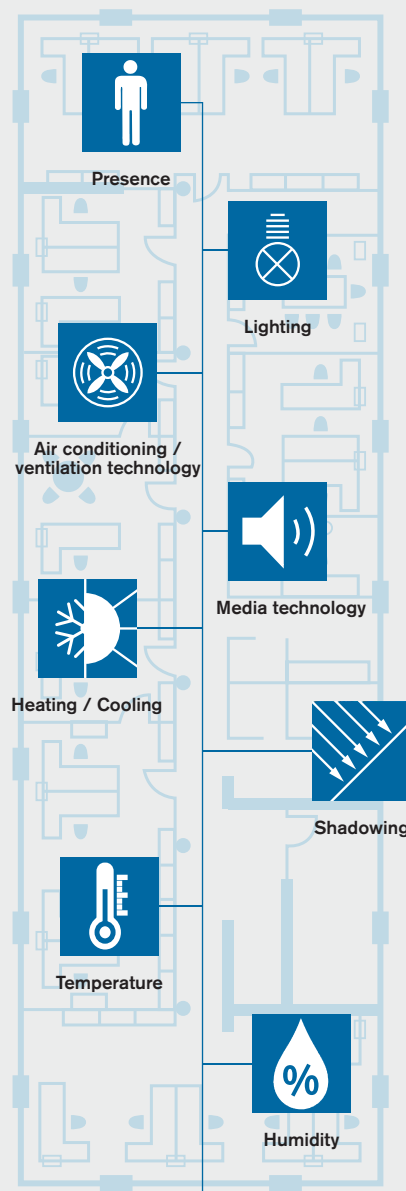
The compact design of the **Open.Room** modules enables space-saving installation and mounting on mounting rails and is therefore ideal for use in ceiling, wall and floor wall-mounted distributors.

## Easy

Because of the push-in connection technology, wiring can be done easily, quickly and without tools. The front connection technology on the **Open.Room** modules allows easy access. The current status of the room automation is displayed clearly and at a glance via LEDs.

## Automatic

If the room layout is changed, the new division of the rooms is carried out by means of graphical operation. It is not necessary to change the electrical and/or HVAC installations.



## Open

Due to the numerous communication interfaces, such as DALI, SMI, KNX, EnOcean, Modbus and many more, the room automation system **Open.Room** is ideally suited for numerous lighting systems, blinds and room operating devices. System compatibility and a neutral standard in data communication is ensured by BACnet/IP and Modbus, among others.

## Compatible

The room automation system **Open.Room** is absolutely compatible with the Neuberger ProGrafNT building management system. Thus, in addition to the hardware, a complete room automation system is available for the control and regulation of complex buildings such as office and administration buildings, schools and universities, hospitals, hotels and residential buildings.

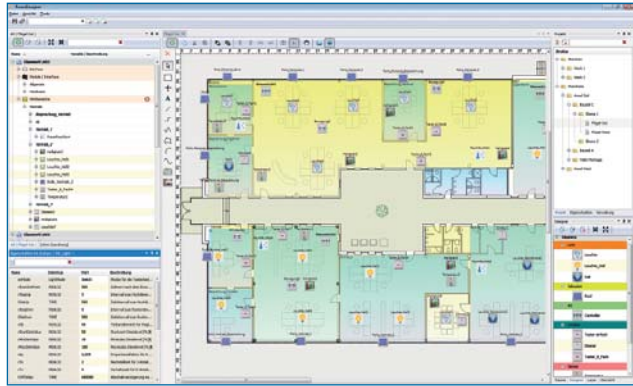
## Competent

**Open.Room** is unique on the market. It fulfils all the functions of room automation - from lighting to shading, from air conditioning to media technology. You also receive concentrated competence in terms of consulting and project planning. **Open.Room** - one system - from one source and made by Neuberger.



Internet, Ethernet TCP/IP,  
BACnet/IP, OPC

RoomDesigner - makes rooms  
flexible, future-proof and intelligent



RoomDesigner can be installed on the BMS.

**Flexible**  
Changes in room layout require maximum flexibility in room layout and adaptability to changes in use. The new room automation system meets the required flexibility without hesitation thanks to its open and modular system.

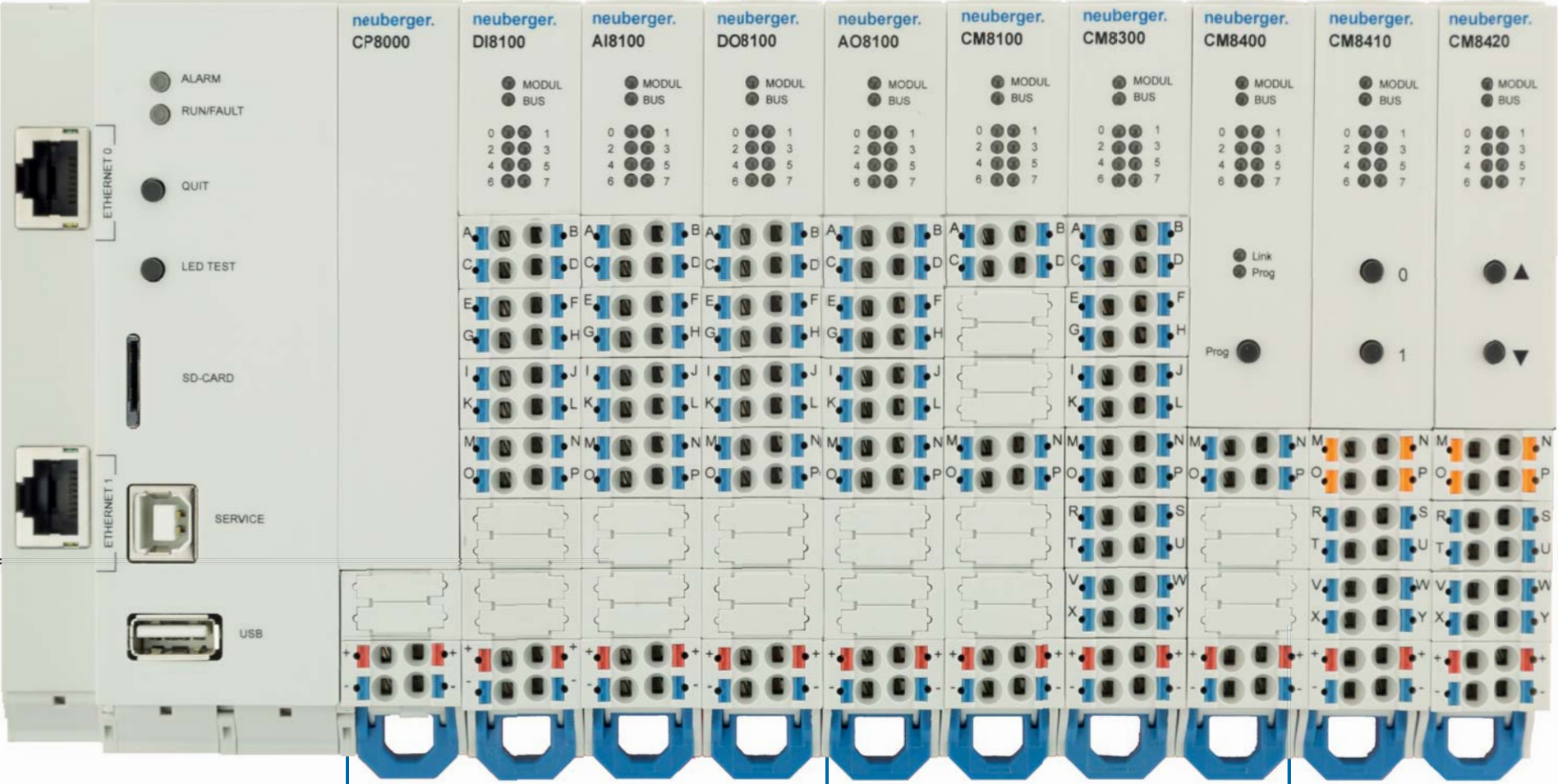
**By mouse click**  
changes in function and use can be made, because the flexible room layout is generated automatically by means of graphical operation.

**Fast, easy**  
and without changing electrical or HVAC installations, the changed room layout is automatically generated. Time and cost-intensive rewiring is no longer necessary.

**Efficient**  
in terms of operations. A high degree of conversion capability increases the economic efficiency. At the same time, operating costs are reduced and the value of the buildings is noticeably improved.

**Green Buildings**  
can be realized by fulfilling all functions according to VDI 3813 or the new VDI13814. In addition, the room automation fulfils the GA efficiency class A according to DIN EN 15232, which automatically ensures building certification according to [LEED / DGNB](#).

Modern room automation - reduces costs, optimises benefits and increases added value

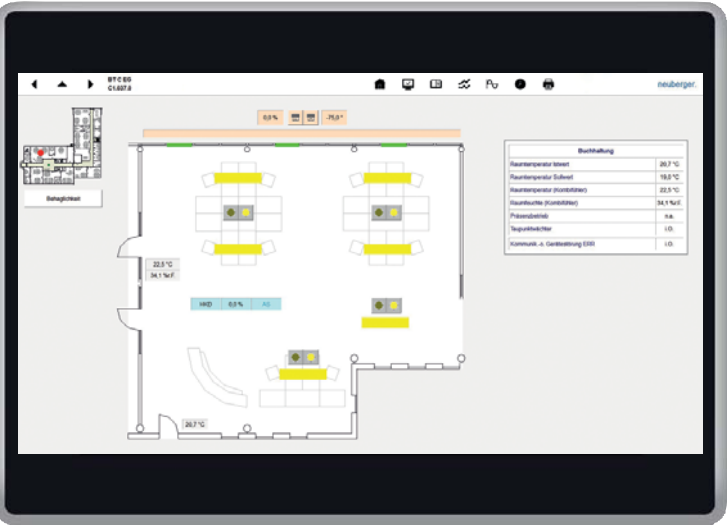


**CPU module with web-interface**  
Interfaces: 2x Ethernet,  
2x USB, 2x microSD  
Protocols: BACnet/IP,  
Modbus RTU/Modbus TCP,  
group fault signal, LED test  
and many more

**Input/output modules**  
for digital and analog inputs and outputs  
Interfaces:  
Ni1000, PT1000,  
0-10V, 0/4-20mA

**Communication modules**  
Interfaces: DALI, EnOcean,  
KNX, SMI, Modbus RTU, MQTT, ...

Room operation with touch panel and room  
control unit according to customer requirements



Flexibel in Größe, Design und Funktion

User-oriented at all levels. **Automatic. Intuitive.**





Neuberger  
Gebäudeautomation GmbH  
Oberer Kaiserweg 6  
91541 Rothenburg o.d.T.  
GERMANY  
Phone: +49 9861 402-0  
Fax: +49 9861 402-333  
E-Mail: [info@neuberger.net](mailto:info@neuberger.net)  
Internet: [www.neuberger.net](http://www.neuberger.net)

## One stop solution

The Neuberger company, founded in 1968, is a highly qualified supplier of products and solutions in the building automation and pharmaceutical industry.

Since 1995 Neuberger is a part of the Weishaupt Group and delivers everything from one source: planning, products, software, installation, commissioning, maintenance and service support 24 hours / 7 days.

Neuberger Gebäudeautomation provides highest efficiency to enable connection of all technical systems.



Headquarters in Rothenburg ob der Tauber, Germany